

Miralix Budget

Miralix develops software for integration of telephony and data, with the purpose to make the working process easier and to improve the efficiency level in the company.

The concept is based upon the motto; "it's that easy".

The solutions are very user-friendly and useful for the company, who wants to provide great service and efficiency towards the Customers.

Miralix Budget is a concept for debit calls. In the Miralix Budget software you receive access to pay money into an extension account, pull money out of it again and obtain a view over the accounts.

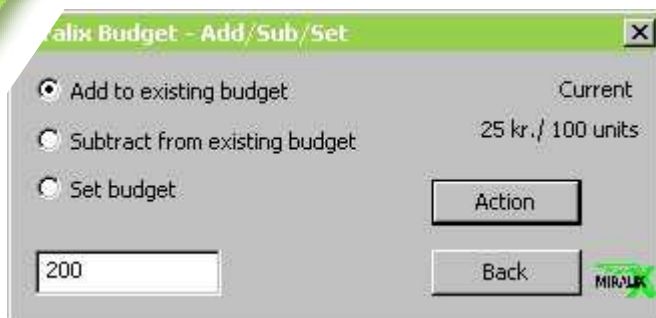
The application works in connection with the Philips Sopho iS3000 telephone system.

Due to the connection with Philips iS3000 the extension will receive a signal when the money nearly is used. The conversation will accordingly be ended in the moment the money is spend and the user will then have to pay money into his or hers account to be able to call again.

Miralix Budget is a good choice for hotels, hospitals, student hostels or other places that wishes to debit phone calls.

The following possibilities are as standard included in Miralix Budget:

- Pay money into the account: When an extension shall be set up for outgoing calls money has to be paid into the account. The administrator or the operator can add the wished amount of money with the Miralix Budget software. Afterwards the extension will be ready for calling.



- Pull money out of the account: During a phone conversation the money amount is calculated in SOPHO units in the Call@Net in Philips Sopho iS3000. Via Miralix Budget you are able to pull money out of your extension account if necessary.

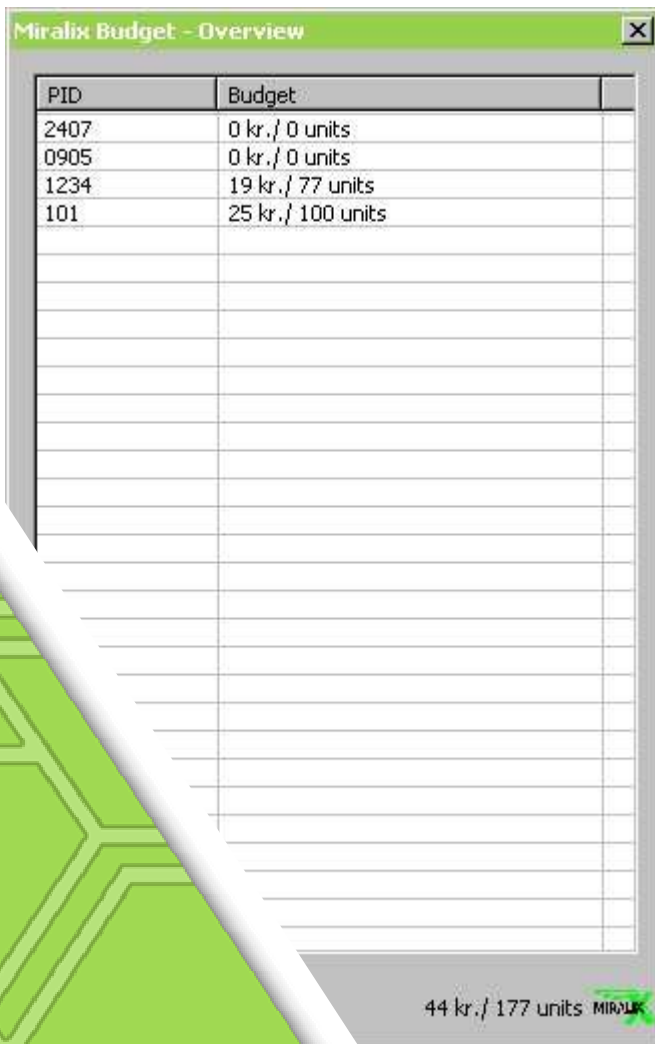
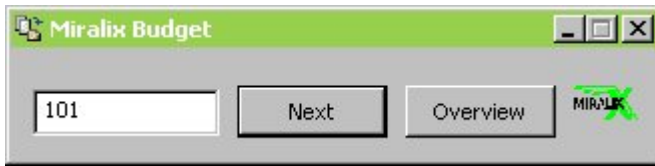
- Show status on an account: You have the possibility to receive status over the amount used for each extension.
- Give a signal when the account nearly is empty: Miralix Budget works together with the facilities in Philips iS3000 and enables you during the phone conversation to receive an acoustic message to the extension, when the account nearly is empty.
- Cut off the conversation: In Philips iS3000 Call@Net there are facilities, which break off the conversation when the SOPHO Units have been used. The user then need to pay money into his or hers account for further calling.



It's that easy

It's that easy

- Choose currency: Due to the setup of Miralix Budget enables you to determine the currency. The operation is made in the configuration program.
- Cost regulation: In connection with setting up Miralix Budget and Call@Net you can determine the regulation between the chosen currency and the SOPHO units.



Incoherence with Philips iS3000:

It is important for the functionality of Miralix Budget that it communicates with Philips iS3000 via a Miralix 3000Server. In Philips iS3000 you have to remember to use IPD Licenses. Furthermore the newest Call@Net software has to be used.

Miralix Budget works afterwards together with SOPHO units and thereby enables you to add and subtract SOPHO units and furthermore obtaining a clear view over how many units each extension has

System requirements:

Philips iS3000 with latest Call@Net system-software, Philips IPD licenses, Miralix 3000Server.

Miralix reserves the right to change the functionality without notice, and is not liable for errors or omissions in this information.

Further Information about the product, contact your dealer

